



AS-44B(T)

煤氣熱注
單缸運輸帶式洗碗碟機

Gas Heated Single Tank
Conveyor Type Dishwasher

AS-44B(T)

煤氣熱注單缸運輸帶式洗碗碟機

Gas Heated Single Tank Conveyor Type Dishwasher

卓匯洗碗碟機特色

CHAMPION Dishwasher with Excellent Characteristics



環保節能

ENVIRONMENTAL
ENERGY SAVING

環保節能設計，既可節省能源，又可達致最高經濟效益。

Our green-design reduces energy consumption which brings you the highest economic efficiency.



穩定耐用

STABLE AND DURABLE

全機採用SUS 304 1.5mm不鏽鋼結構及機械式控制設計，於高溫及潮濕的環境中亦應能發揮超高耐用性及穩定性。

The construction adopt SUS 304 1.5mm stainless steel and mechanical control. Durability and stability can be maintained even in high temperature and moisture environment.



高效運作

HIGH EFFICIENCY

高速設計及強勁水力輸出，提升洗滌效率，減省人手。

High speed design and strong washing power, enhance the washing efficiency and manpower saving.



國際認可

INTERNATIONAL
RECOGNITION

CHAMPION洗碗碟機全系列獲國際認可，符合國際食品安全及衛生標準；認可設備於材料、易潔度、溫度、時間、水壓、運作設計等、各方面均達到國際標準。

CHAMPION Dishwasher complied with the international standard of food safety and hygiene, approved by HACCP which achieved the standard of material used, washable, temperature, time, water pressure and operation, hygiene and safety image enhanced.



國際廠房

INTERNATIONAL
MANUFACTORY

首家港資公司創立國際性廠房，全線洗碗碟機在嚴密的工序及監控下生產；從技術研發，原材料選材，流程設計，質量管理及控制都一絲不苟。

The first international dishwashers' manufactory financed and managed by Hong Kong Company. The full series of dishwashers are manufactured under rigorous procedures and inspection, from research and development, materials selection, procedure design, to quality control.



簡單易用

SIMPLE TO USE

採用簡易操作系統，一按式啟動及自動化操作，任何用家操作自如。

Adopt user friendly operation system. "One-Button" activation and automatic operation are easy for any users to control.

信心保證 Quality Assurance

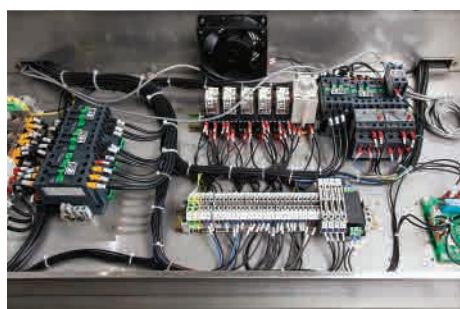
- 食品安全認證 HACCP International Food Safety Certificate 
- CSA認證  Certificate
- 歐盟認證  Certificate
- 質量管理認證 Quality Management System  ISO 9001:2018 Certificate
- 香港政府食物環境衛生署認可牌照 HKSAR Food and Environmental Hygiene Dept. Approved Certificate



卓越設計功能 AS-44B(T) Excellent Design



▲ 重工齒輪式馬達傳送系統，連防障礙和過荷保護
Heavy duty gear box conveyor system with jam and overload protection



▼ 採用高速運輸帶式設計，加快餐具運輸速度，提高洗滌效率。

Application of high speed conveyor accelerates the speed of cutlery transportation. Increase the washing efficiency.

▲ 電控箱及過荷保護裝置位於機頂，減少與水源接觸的機會，避免因濺濕導致機件故障及危險。
Control panel and overload protection are located on the top of machine, thus minimize the risk of machine break down and any safety issues which caused by the contact of water.

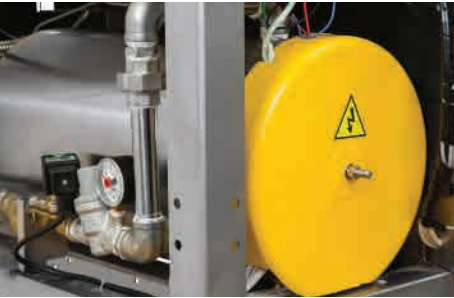


▲ 採用內凹式噴孔設計，有效阻隔垃圾及食物渣滓，避免噴孔受到阻塞，並加強清洗能力和擴闊噴洗範圍。

Debossed anti-clog nozzles provides powerful washing performance, strainer pans and baskets can separate the food soils and trash in order to avoid any nozzle blockage.

▼ 採用雙溫控設計技術，加強穩定過水溫度，保證消毒效果，有效節省能源運用。

Dual thermostat technology which provide stable sanitizing temperature and energy saving.



▲ 採用ABB合金強勁水泵摩打，並配合耐用不銹鋼車葉，提供強力清洗效果，防止食物或餐具殘渣堵塞。

Adopt ABB pump motor with durable alloy, guarantee powerful washing result and prevent blockage by food or crockery residue.



| ⚙ 技術規格 Technical Data | |
|--------------------------------|--|
| 外形尺寸 Size | 1150闊(W) x 695 深(D) x 1640 高(H) 毫米(mm) |
| 開門高度 Door Opening Height | 1950 毫米(mm) |
| 機器淨重 Net Weight | 240 公斤(kg) |
| 膠篩尺寸 Rack Size | 500 闊(W) x 500 深(D) 毫米(mm) |
| 每篩運行時間 Operation Speed / Rack | 16 秒(sec) / 篩(Rack) |
| 最大洗滌量 Machine Maximum Capacity | 230 篩(Racks) / 小時(Hour) |
| 最高洗滌高度 Loading Height | 450 毫米(mm) |
| 水缸容量 Tank Capacity | 65 公升(Liter) |
| 每篩耗水量 Rinse Usage | 2 公升(Liter) / 篩(Rack) |
| 建議水壓 Suggest Water Pressure | 15 - 25 磅 / 平方英寸(psi) |
| 主洗水缸加熱功率 Wash Tank Heater | 15 千瓦(kW) |
| 主洗水泵功率 Wash Pump Power | 1.5 千瓦(kW) |
| 運輸帶馬達功率 Conveyor Motor | 0.5 千瓦(kW) |
| 升溫爐功率 Rinsing Tank Power | 5.4 千瓦(kW) |
| 總耗電功率 Electrical Loading | 23 千瓦(kW) |
| 供電要求 Power Supply | 380 伏特(V) / 50 赫茲(Hz) / 三相(3 Phase) 【40 安培(Amp)】 |
| 煤氣熱水爐 Town Gas Water Heater | NJW321 FEL |



煤氣熱水爐 Town Gas Water Heater
(NJW321 FEL)

| | |
|-------------------------------|--|
| 外形尺寸 Size | 464 闊(W) x 615 高(H) x 240 深(D) 毫米(mm) |
| 熱水輸出量 Hot Water Output (80°C) | 13.4 公升(Liter) / 分鐘(min) (入水溫度23.6°C Incoming at 23.6°C) |
| 用氣量 Gas Consumption | 66.3 千瓦(kW) |
| 供電要求 Power Supply | AC 220 伏特(V) / 50 赫茲(Hz) / 單相(1 Phase) 【13 安培(Amp)】 |
| 安裝模式 Installation | 掛牆式 Wall Mounting |

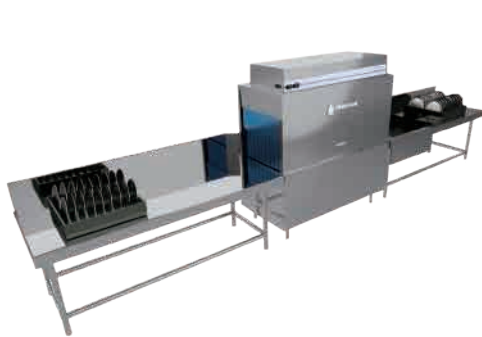
煤氣公司 工商業查詢熱線 Towngas C & I Enquiry Hotline : 2963 3300

AS-44B(T)

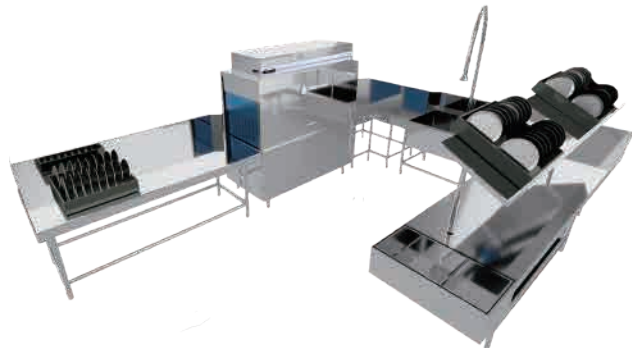
煤氣熱注單缸運輸帶式洗碗碟機

Gas Heated Single Tank Conveyor Type Dishwasher

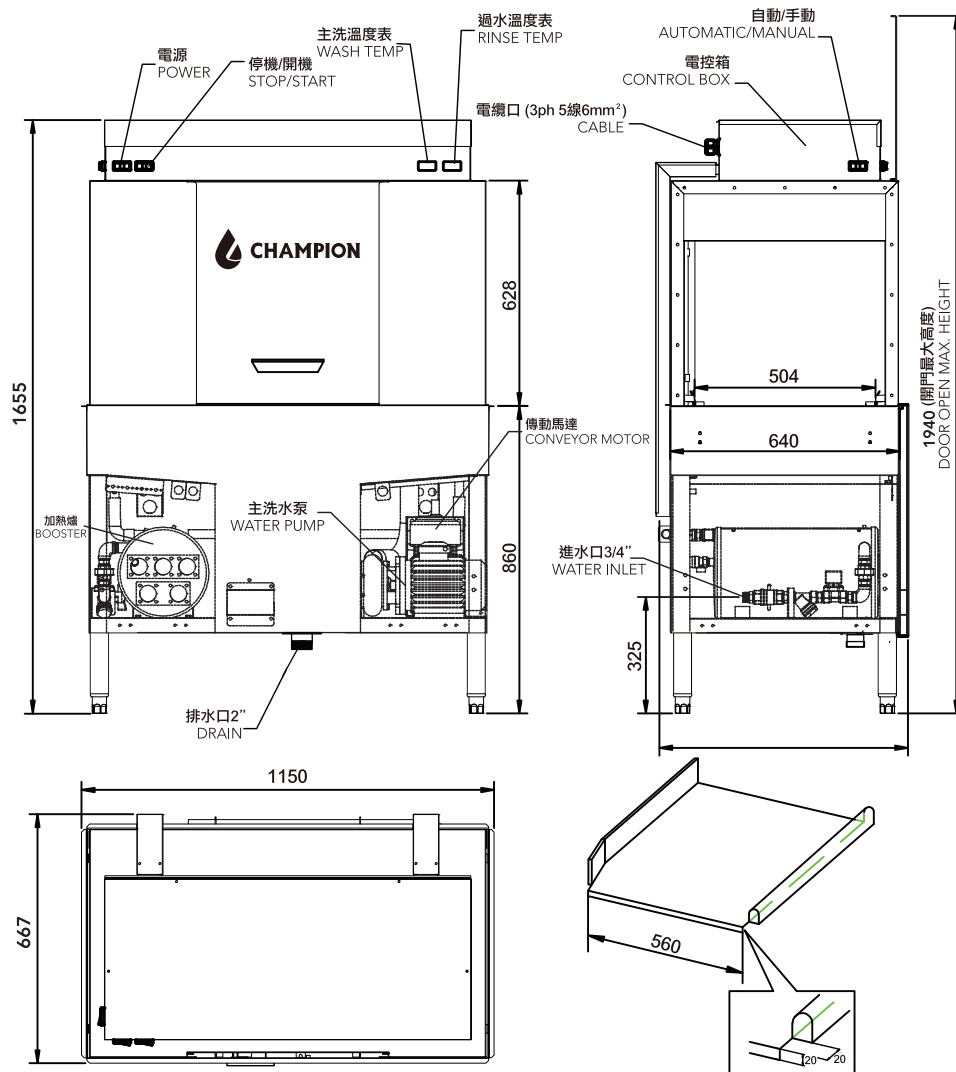
運作圖 Operation Diagram



標準式運作圖
Standard Type Operation



高流量運作圖
High Volume Operation



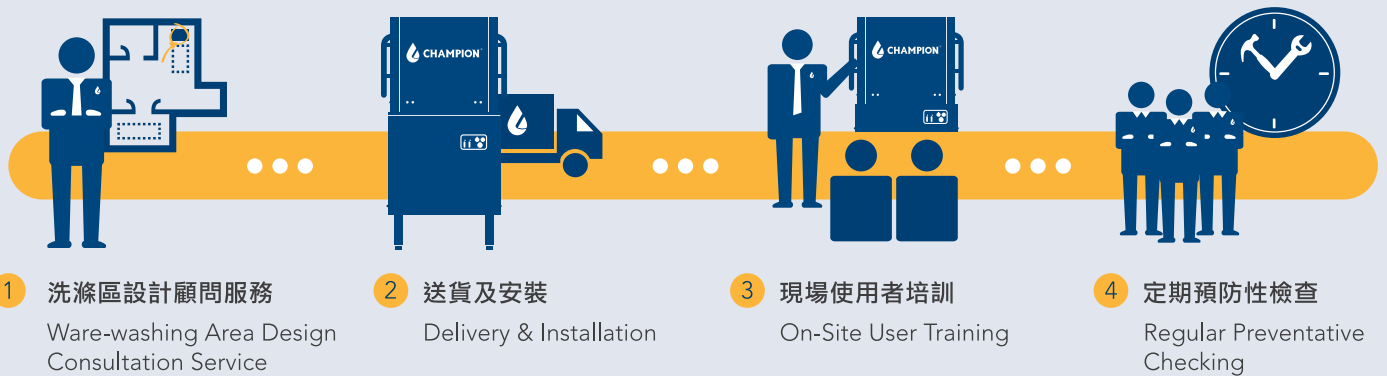
安裝要求：

- (1) 電源：380V/ 50Hz/ 3/ N/ PE，電源線為25mm² 及100Amp隔離開關
- (2) 供水：管徑 3/4"，球閥3/4"，3/4"外牙絲，建議水壓15-25psi
- (3) 排水口為：排水口直徑 2"

原廠一站式服務 Manufacturer One-Stop Services

我創造 · 我重視
We Make · We Care

從設計流程開始，直至售後支援服務，卓滙都細心關顧客戶所需。
We care about our customers and take care of anything starting from design, after-sale and maintenance services.



售後服務才是我們的開始 Post-sales Service is where our Business start.



專業顧問團隊
Professional Consulting Team



衛生諮詢培訓
Hygiene Consultation & Training



安心檢查維護
Secure Maintenance Service



流動工程車隊
Engineering Motorcade



充裕零件供應
Sufficient Spare Parts Supply

卓滙集團
Champion Group

香港
Hong Kong

☎ (852) 2475 9875
✉ enquiry_hk@champion-chem.com

中國
China

☎ (86) 0755 2821 8882
✉ enquiry_ch@champion-chem.com

澳門
Macau

☎ (853) 2823 0511
✉ enquiry_mc@champion-chem.com

台灣
Taiwan

☎ (886) 2 2643 6111
✉ enquiry_tw@champion-chem.com