



煤氣  
Towngas



CHAMPION®  
Every Drop is Momentous



## AS-44B(G)

煤氣熱注式  
單缸運輸帶式洗碗碟機

Gas Heated Single Tank  
Conveyor Type Dishwasher  
(Heat Recovery Type)

# AS-44B(G)

煤氣熱注式單缸運輸帶式洗碗碟機 (熱回收版)

Gas Heated Single Tank Conveyor Type Dishwasher (Heat Recovery Type)

卓滙洗碗碟機特色

CHAMPION Dishwasher with Excellent Characteristics



## 突破性節能設計

BREAKTHROUGH OF ENERGY SAVING DESIGN

比較傳統機型節省高達30%的能源，同時達到衛生標準。

Achieve over 30% energy consumption saving compare with traditional models and achieve the hygiene standard at the same time.



## 穩定耐用

STABLE AND DURABLE

全機採用SUS 304 1.5mm不鏽鋼結構及機械式控制設計，於高溫及潮濕的環境中亦應能發揮超高耐用性及穩定性。

The construction adopt SUS 304 1.5mm stainless steel and mechanical control. Durability and stability can be maintained even in high temperature and moisture environment.



## 高效運作

HIGH EFFICIENCY

高速設計及強勁水力輸出，提升洗滌效率，減省人手。

High speed design and strong washing power, enhance the washing efficiency and manpower saving.



## 國際認可

INTERNATIONAL RECOGNITION

CHAMPION洗碗碟機全系列獲國際認可，符合國際食品安全及衛生標準；認可設備於材料、易潔度、溫度、時間、水壓、運作設計等、各方面均達到國際標準。

CHAMPION Dishwasher complied with the international standard of food safety and hygiene, approved by HACCP which achieved the standard of material used, washable, temperature, time, water pressure and operation, hygiene and safety image enhanced.



## 國際廠房

INTERNATIONAL MANUFACTORY

首家港資公司創立國際性廠房，全線洗碗碟機在嚴密的工序及監控下生產；從技術研發，原材料選材，流程設計，質量管理及控制都一絲不苟。

The first international dishwashers' manufactory financed and managed by Hong Kong company. The full series of dishwashers are manufactured under rigorous procedures and inspection, from research and development, materials selection, procedure design, to quality control.



## 簡單易用

SIMPLE TO USE

採用簡易操作系統，一按式啟動及自動化操作，任何家用操作自如。

Adopt user friendly operation system. "One-Button" activation and automatic operation are easy for any users to control.

## 信心保證 Quality Assurance

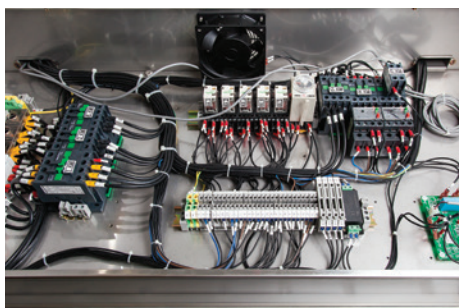
- 食品安全認證 HACCP International Food Safety Certificate 
- CSA認證  Certificate
- 歐盟認證  Certificate
- 質量管理認證 Quality Management System  ISO 9001:2008 Certificate
- 香港政府食物環境衛生署認可牌照 HKSAR Food and Environmental Hygiene Dept. Approved Certificate

## 卓越設計功能 AS-44B(G) Excellent Design



▲ 採用內凹式噴孔設計，防堵塞，並加強清洗能力和擴闊噴洗範圍

Debossed anti-clog nozzles provides powerful washing performance



▲ 機頂式控制箱設計，令維修檢查更方便快捷，縮短停機時間

Top mounted control panel for convenient operation and easy maintenance, reduce the machine downtime

▼ 採用ABB合金強勁水泵摩打，並配合耐用不銹鋼車葉

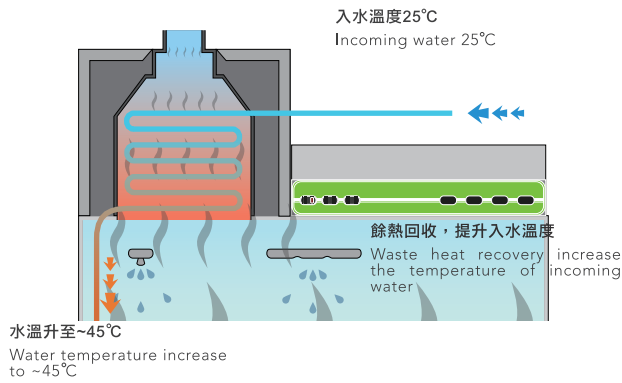
ABB pump motor & alloy impeller guarantee maximum durability



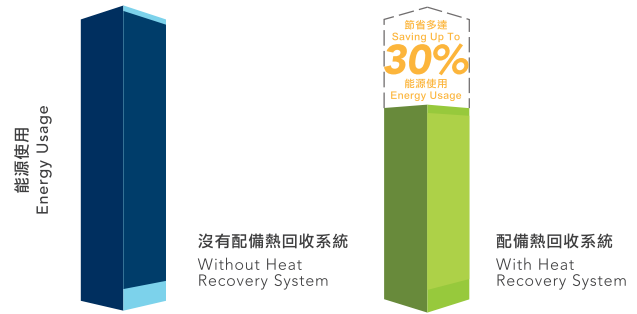
▲ 重工齒輪式馬達傳送系統，連防障礙和過荷保護  
Heavy duty gear box conveyor system with jam and overload protection



## 熱回收系統 Heat Recovery System



## 熱回收能源節省 Energy Saving by Heat Recovery System



\*以上資料只作參考用途，實際數據需視乎現場環境情況。  
The above information is for reference purposes only. Actual data is subjected to on-site situation.

## 技術規格 Technical Data

外形尺寸 Size	1150 (W) x 695 (D) x 1979 (H) mm
開門高度 Door Opening Height	1950 mm
機器淨重 Net Weight	240 kg
膠篩尺寸 Rack Size	500 (W) x 500 (D) mm
最大洗滌量 Machine Capacity	230 篩 (Racks) / 小時 (Hour)
最高洗滌高度 Loading Height	450 mm
水缸容量 Tank Capacity	80 L
每篩耗水量 Rinse Usage	2 L / 篩 (Rack)
建議水壓 Recommend Water Pressure	15–25 psi
主洗水缸加熱功率 Wash Tank Heater	9 kW
主洗水泵功率 Wash Pump Power	1.5 kW (2 HP)
運輸帶馬達功率 Conveyor Motor	0.5 kW
內置電熱水爐功率 Internal Booster Heater	9 kW
總耗電功率 Electrical Loading	20 kW (30 Amp)
供電要求 Power Supply	380 V / 50 Hz / 3 Phase (30 Amp)
煤氣熱水爐 Town Gas Water Heater	NJW321 FEL



## 煤氣熱水爐 Town Gas Water Heater (NJW321 FEL)

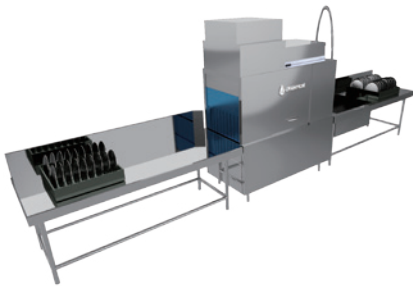
外形尺寸 Size	464 (W) x 615 (H) x 240(D) mm
最高熱水輸出量 Max. Hot Water Output (83°C)	13.4 L / min (入水溫度 23.6°C Incoming at 23.6 C)
煤氣輸入量 Gas Rate	66.3 kW
供電要求 Power Supply	AC 220 V / 50 Hz / 133 W
安裝模式 Installation	掛牆式 Wall Mounting

# AS-44B(G)

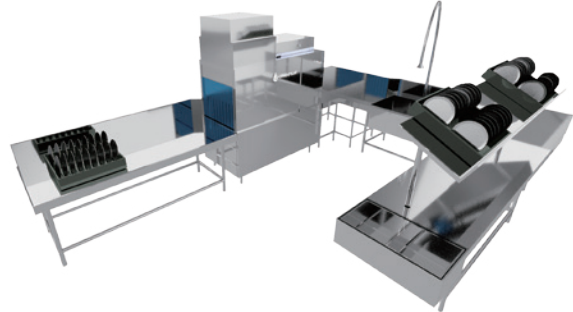
煤氣熱注式單缸運輸帶式洗碗碟機 (熱回收版)  
Gas Heated Single Tank Conveyor Type Dishwasher (Heat Recovery Type)

## 透視圖 Perspective

### 運作圖 Operation Diagram

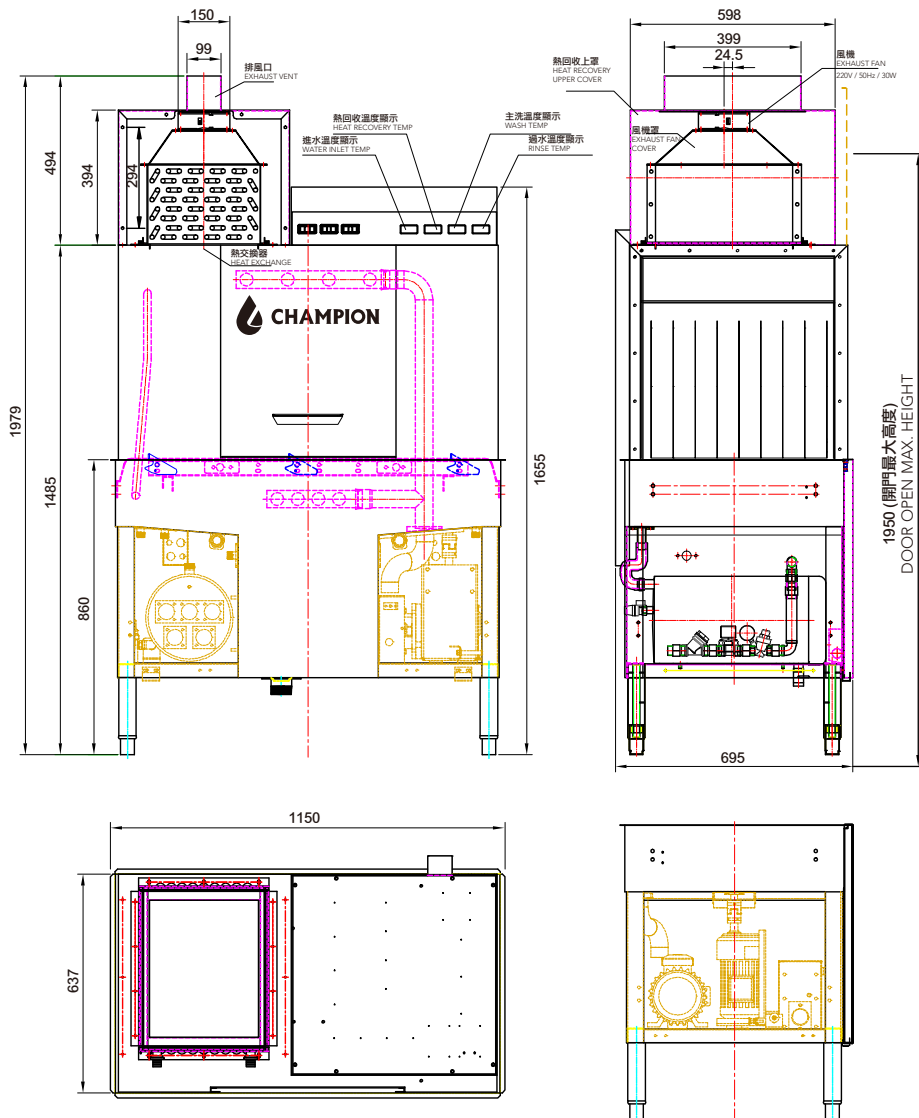


標準式運作圖  
Standard Type Operation



高流量運作圖  
High Volume Operation

### 透視圖 Perspective



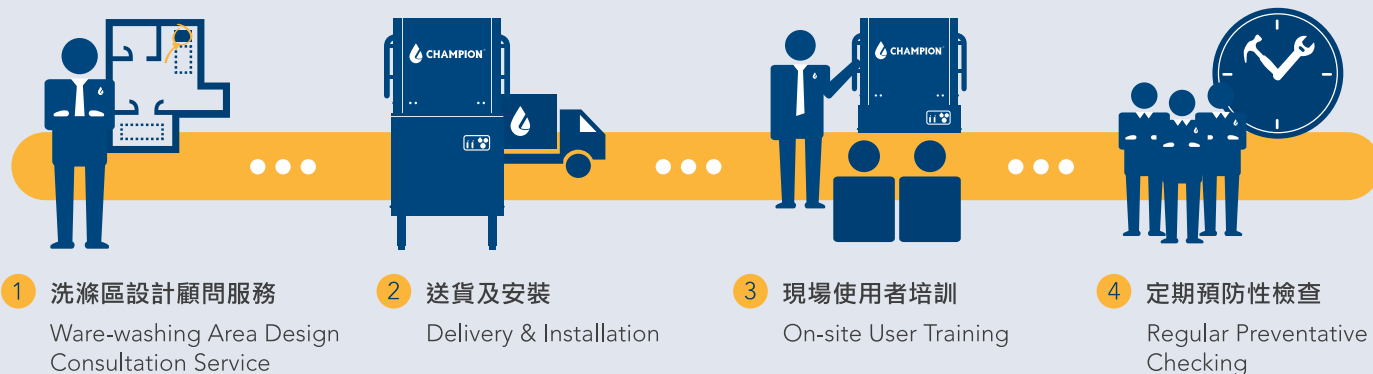
#### 安裝要求：

- (1) 電源：三相四線，電源線為 $25\text{mm}^2$ 及100Amp隔離開關
- (2) 供水：管徑 $3/4"$ ，球閥 $3/4"$ ， $3/4"$ 外牙絲，建議水壓15-25psi
- (3) 排水口為：排水口直徑 $2"$

## 卓越一站式服務 Excellent One-Stop Services

每一點滴，用心連繫  
Every Drop is Momentous

從設計流程開始，直至售後支援服務，卓滙都細心關顧客戶所需。  
We care about our customers and take care of anything starting from design, after-sale and maintenance services.



## 專業服務 Professional Service



專業顧問團隊  
Professional Consulting Team



衛生諮詢培訓  
Hygiene Consultation & Training



安心檢查維護  
Secure Maintenance Service



流動工程車隊  
Engineering Motorcade



充裕零件供應  
Sufficient Spare Parts Supply

### 聯絡資料 Contact Information



歡迎聯絡我們以了解更多相關資料。  
For more details of the above information, please do not hesitate to contact us.

香港  
Hong Kong

卓滙化工有限公司  
Champion Chemicals Limited.

☎ (852) 2475 9875  
✉ enquiry\_hk@champion-chem.com

中國  
China

盛邦滙商貿(深圳)有限公司  
Champion Limited

☎ (86) 0755 2821 8882  
✉ enquiry\_ch@champion-chem.com

澳門  
Macau

卓滙化工有限公司  
Champion Chemicals Limited.

☎ (852) 2823 0511  
✉ enquiry\_mc@champion-chem.com

台灣  
Taiwan

卓滙股份有限公司  
Champion (Taiwan) Limited

☎ (886) 2 2643 6111  
✉ enquiry\_tw@champion-chem.com